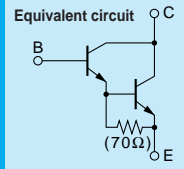


Darlington 2SD2390



Silicon NPN Triple Diffused Planar Transistor (Complement to type 2SB1560)

Application : Audio, Series Regulator and General Purpose

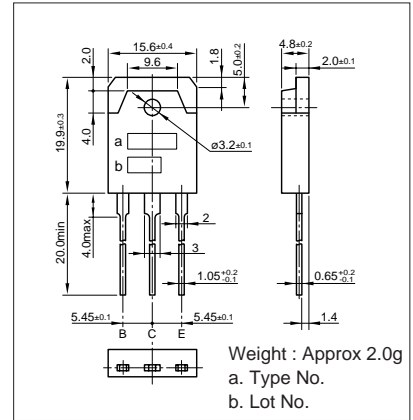
Absolute maximum ratings (Ta=25°C)

Symbol	2SD2390	Unit
VCBO	160	V
VCEO	150	V
VEBO	5	V
Ic	10	A
Ib	1	A
Pc	100(Tc=25°C)	W
Tj	150	°C
Tstg	-55 to +150	°C

Electrical Characteristics (Ta=25°C)

Symbol	Conditions	2SD2390	Unit
ICBO	V _{CB} =160V	100max	μA
IEBO	V _{EB} =5V	100max	μA
V(BR)CEO	I _c =30mA	150min	V
hFE	V _{CE} =4V, I _c =7A	5000min*	
V _{CE(sat)}	I _c =7A, I _B =7mA	2.5max	V
V _{BE(sat)}	I _c =7A, I _B =7mA	3.0max	V
f _r	V _{CE} =12V, I _E =-2A	55typ	MHz
COB	V _{CB} =10V, f=1MHz	95typ	pF

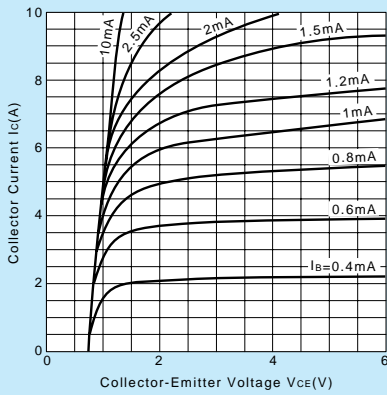
External Dimensions MT-100(TO3P)



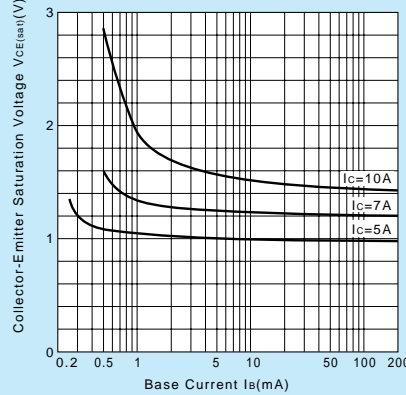
Typical Switching Characteristics (Common Emitter)

V _{CC} (V)	R _L (Ω)	I _c (A)	V _{BB1} (V)	V _{BB2} (V)	I _{B1} (mA)	I _{B2} (mA)	t _{on} (μs)	t _{stg} (μs)	t _f (μs)
70	10	7	10	-5	7	-7	0.5typ	10.0typ	1.1typ

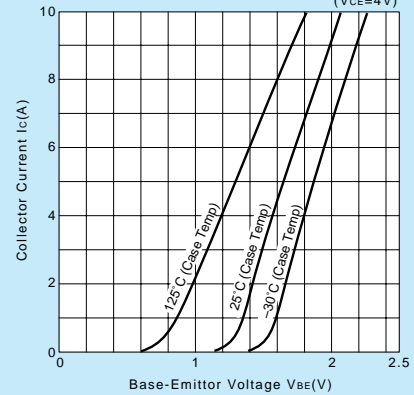
I_c-V_{CE} Characteristics (Typical)



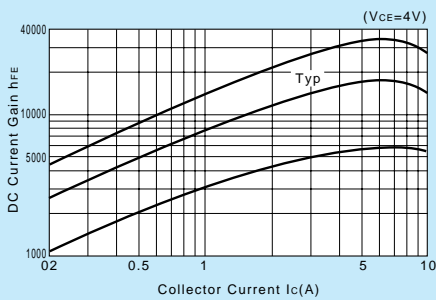
V_{CE(sat)}-I_B Characteristics (Typical)



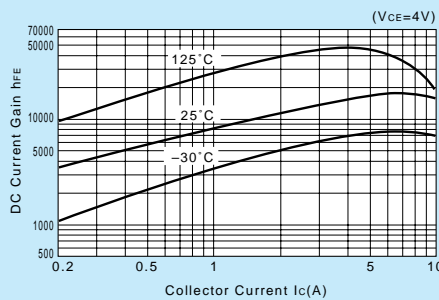
I_c-V_{BE} Temperature Characteristics (Typical)



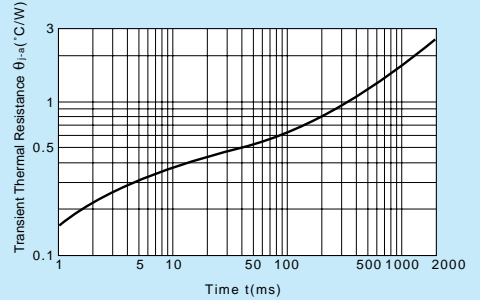
h_{FE}-I_c Characteristics (Typical)



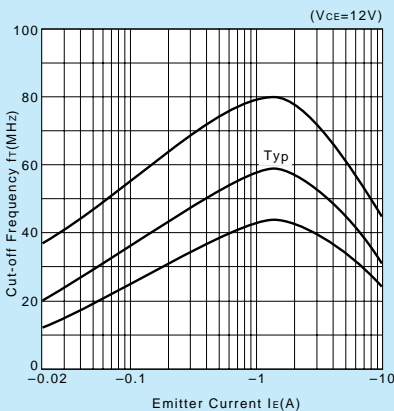
h_{FE}-I_c Temperature Characteristics (Typical)



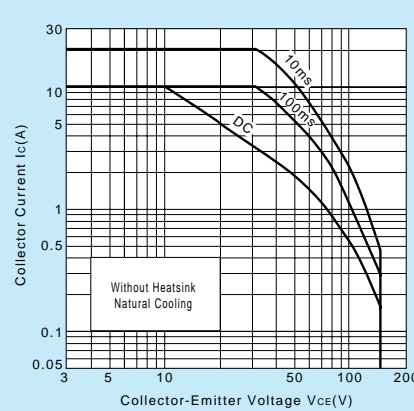
θ_{j-a}-t Characteristics



f_T-I_E Characteristics (Typical)



Safe Operating Area (Single Pulse)



P_c-T_a Derating

